



HARVEST VALUE

## Bean

GREEN MIX CUT RANDOM CANNED

# 4330270



6/#10 CN

### Product Description

Manufacturer: HARVEST VALUE, Mfr. Product # 170524

#### Additional Description

PRODUCT OF CANADA. INGREDIENTS: GREEN BEANS, WATER, SALT. TRANS FAT FREE. MIXED SIEVE.

#### Ingredients

GREEN BEANS, WATER, SALT.

#### Product Information

Class: 17 - FRUITS & VEGETABLES, CANNED & DRIED

Category: 143 - VEGETABLES, CANNED

Group: 1495 - BEANS, GREEN, CANNED

### Preparation & Cooking

#### Preparations and Cooking Instructions

FULLY COOKED.

#### Handling Instructions

COOL DRY STORAGE.

#### Serving Suggestions:

USED AS A SIDE DISH OR AN INGREDIENT.



# GREEN MIX CUT RANDOM CANNED

HARVEST VALUE

6/#10 CN

# 4330270

Manufacturer: HARVEST VALUE

Manufacturer Product #: 170524

## Nutritional Facts

Serving Size g (120g)  
Servings Per Container

Amount Per Serving  
Calories 20  
Calories from Fat 0

% Daily Value \*

Total Fat 0g	0%
Saturated Fat 0g	0%
Trans Fat 0g	
Cholesterol 0mg	0%
Sodium 330mg	14%
Total Carbohydrate 4g	1%
Dietary Fiber 2g	8%
Sugars 2g	
Protein 1g	
Vitamin A	4%
Vitamin C	6%
Calcium	2%
Iron	2%

\* Percent Daily Values are based on a 2,000 calorie diet. Your daily values may be higher or lower depending on your calorie needs:

	Calories	2,000	2,500
Total Fat	Less than	65g	80g
Sat Fat	Less than	20g	25g
Cholesterol	Less than	300mg	300mg
Sodium	Less than	2400mg	2400mg
Total Carbohydrate		300g	375mg
Dietary Fiber		25g	30mg

## Supplemental Facts

% Daily Value \*

Vitamin D 0 IU	0%
Folic Acid 18 mcg	
Phosphorus 19 mg	
Ash .92 g	
Copper .07 mg	
Magnesium 13 mg	
Niacin .2 mg	
Pantothenic Acid .1 mcg	
Potassium 92 mg	
Riboflavin .05 mg	
Thiamin .02 mg	
Vitamin B12 0 mcg	0%
Vitamin B6 .03 mg	1.5%
Water 94.68 g	
Zinc .2 mg	

\* Percent Daily Values are based on a 2,000 calorie diet. Your daily values may be higher or lower depending on your calorie needs.

## Allergens

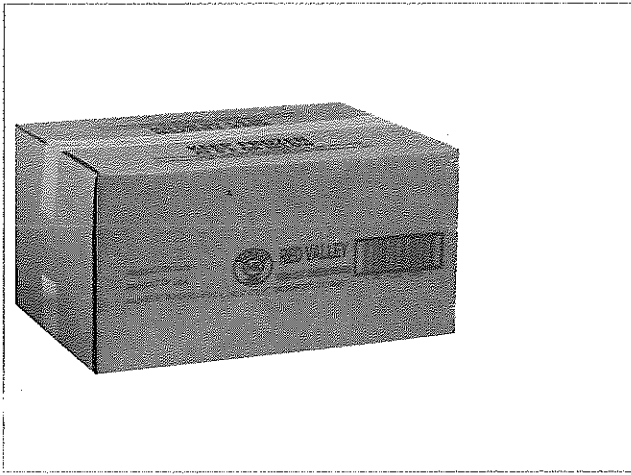
ALLERGEN	DOES NOT CONTAIN	CONTAIN	MAY CONTAIN	NO DATA
Crustacean	•			
Eggs	•			
Fish	•			
Gluten				•
Lactose				•
Milk	•			
Mustard				•
Peanuts	•			
Soy	•			
Tree nuts	•			
Wheat	•			

## Marketing Claims

- This product is kosher

## Nutritional Disclaimer

The nutritional and ingredient information provided is based on data US Foods, Inc. receives from manufacturers and may include information derived from third-party sources such as the United States Department of Agriculture. The information provided is representative and, as a result, there may be some slight differences between the information posted and the information on the product label with respect to ingredients and/or nutritional values. The most accurate and up to date source for product information is on the product label. US Foods, Inc. neither assumes any legal liability nor makes any warranty or guaranty, either express or implied, regarding the completeness, accuracy or usefulness of this information. Product images are provided for reference only and may not reflect current packaging.



RED VALLEY

**Bean**

GREEN CUT FROZEN

# 6784516



20 LB

## Product Description

Manufacturer: BONDUELLE USA INC, Mfr. Product # 13002

### Additional Description

DOMESTIC GREEN BEANS.

### Ingredients

GREEN BEANS

### Product Information

Class: 26 - GROCERY, REF & FZN

Category: 222 - VEGETABLES, FZN

Group: 1496 - BEANS, GREEN, FROZEN

## Preparation & Cooking

### Preparations and Cooking Instructions

Cooking: Place contents in boiling water. Cook until tender. Do not overcook. Season to taste and serve. For food safety and best quality, cook to an internal temperature of 160 degrees F.

### Handling Instructions

Keep frozen below -18 degrees C/0 degrees F. Do not allow contents to thaw.

### Serving Suggestions:

Side dish, pot-au-feu, soup, stew, rice, stuffing, sauce



## GREEN CUT FROZEN

RED VALLEY

20 LB

# 6784516

Manufacturer: BONDUELLE USA INC

Manufacturer Product #: 13002

### Nutritional Facts

Serving Size (85GR)  
Servings Per Container 106

Amount Per Serving  
Calories 20  
Calories from Fat 0

% Daily Value \*

Total Fat 0g	0%
Saturated Fat 0g	0%
Trans Fat 0g	
Cholesterol 0mg	0%
Sodium 0mg	0%
Total Carbohydrate 5g	2%
Dietary Fiber 3g	8%
Sugars 1g	
Protein 1g	
Vitamin A	8%
Vitamin C	6%
Calcium	4%
Iron	4%

\* Percent Daily Values are based on a 2,000 calorie diet. Your daily values may be higher or lower depending on your calorie needs:

	Calories	2,000	2,500
Total Fat	Less than	65g	80g
Sat Fat	Less than	20g	25g
Cholesterol	Less than	300mg	300mg
Sodium	Less than	2400mg	2400mg
Total Carbohydrate		300g	375mg
Dietary Fiber		25g	30mg

### Supplemental Facts

% Daily Value \*

Ash .53 g	
Copper .049 mg	
Magnesium 22 mg	
Niacin .496 mg	
Pantothenic Acid .104 mg	
Thiamin .098 mg	
Vitamin B12 0 mcg	0%
Vitamin B6 .044 mg	2.2%
Water 89.93 g	

\* Percent Daily Values are based on a 2,000 calorie diet. Your daily values may be higher or lower depending on your calorie needs.

### Allergens

ALLERGEN	DOES NOT CONTAIN	CONTAIN	MAY CONTAIN	NO DATA
Crustacean	•			
Eggs	•			
Fish	•			
Gluten				•
Lactose				•
Milk	•			
Mustard				•
Peanuts	•			
Soy	•			
Tree nuts	•			
Wheat	•			

### Nutritional Claims

- This product is trans fat free

### Marketing Claims

- This product is kosher

### Nutritional Disclaimer

The nutritional and ingredient information provided is based on data US Foods, Inc. receives from manufacturers and may include information derived from third-party sources such as the United States Department of Agriculture. The information provided is representative and, as a result, there may be some slight differences between the information posted and the information on the product label with respect to ingredients and/or nutritional values. The most accurate and up to date source for product information is on the product label. US Foods, Inc. neither assumes any legal liability nor makes any warranty or guaranty, either express or implied, regarding the completeness, accuracy or usefulness of this information. Product images are provided for reference only and may not reflect current packaging.



HARVEST VALUE

## Broccoli

CUT IQF FROZEN

# 3328424



20 LB

### Product Description

Manufacturer: HARVEST VALUE, Mfr. Product # 671670

#### Additional Description

HARVEST VALUE IS A B GRADE PRODUCT. SIZE: STALK MATERIAL .75"-1", HEAD MATERIAL .75-2". COLOR: GOOD COLOR AND BRIGHTNESS.

#### Ingredients

BROCCOLI

#### Product Information

Class: 26 - GROCERY, REF & FZN

Category: 222 - VEGETABLES, FZN

Group: 1517 - BROCCOLI, FROZEN

### Preparation & Cooking

#### Preparations and Cooking Instructions

SAUTEE, STEAM OR LIGHTLY BOIL. STIR IN BUTTER AND DESIRED SEASONING FOR A UNIQUE FLAVOR.

#### Handling Instructions

KEEP FROZEN UNTIL READY TO USE.

#### Serving Suggestions:

CAN BE USED AS A SIDE DISH OR IN A RECIPE WHERE BROCCOLI IS REQUIRED



## CUT IQF FROZEN

HARVEST VALUE

20 LB

# 3328424

Manufacturer: HARVEST VALUE

Manufacturer Product #: 671670

### Nutritional Facts

Serving Size (102G)  
Servings Per Container 89

Amount Per Serving  
Calories 30  
Calories from Fat 0

% Daily Value \*

Total Fat 0g	0%
Saturated Fat 0g	0%
Trans Fat 0g	
Cholesterol 0mg	0%
Sodium 25mg	1%
Total Carbohydrate 5g	2%
Dietary Fiber 3g	12%
Sugars 1g	
Protein 3g	
Vitamin A	21%
Vitamin C	100%
Calcium	4%
Iron	4%

\* Percent Daily Values are based on a 2,000 calorie diet. Your daily values may be higher or lower depending on your calorie needs:

		Calories	2,000	2,500
Total Fat	Less than	65g	80g	
Sat Fat	Less than	20g	25g	
Cholesterol	Less than	300mg	300mg	
Sodium	Less than	2400mg	2400mg	
Total Carbohydrate		300g	375mg	
Dietary Fiber		25g	30mg	

### Supplemental Facts

% Daily Value \*

None Specified at this time

\* Percent Daily Values are based on a 2,000 calorie diet. Your daily values may be higher or lower depending on your calorie needs.

### Allergens

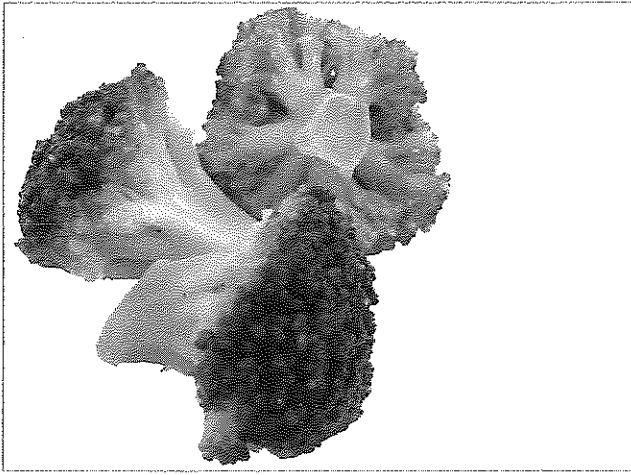
ALLERGEN	DOES NOT CONTAIN	CONTAIN	MAY CONTAIN	NO DATA
Crustacean	•			
Eggs	•			
Fish	•			
Gluten				•
Lactose				•
Milk	•			
Mustard				•
Peanuts	•			
Soy	•			
Tree nuts	•			
Wheat	•			

### Marketing Claims

- This product is kosher

### Nutritional Disclaimer

The nutritional and ingredient information provided is based on data US Foods, Inc. receives from manufacturers and may include information derived from third-party sources such as the United States Department of Agriculture. The information provided is representative and, as a result, there may be some slight differences between the information posted and the information on the product label with respect to ingredients and/or nutritional values. The most accurate and up to date source for product information is on the product label. US Foods, Inc. neither assumes any legal liability nor makes any warranty or guaranty, either express or implied, regarding the completeness, accuracy or usefulness of this information. Product images are provided for reference only and may not reflect current packaging.



MONARCH

## Broccoli

FLORET GRADE A IMPORTED IQF FROZEN

# 1340652



12/2 LB

### Product Description

Manufacturer: MONARCH, Mfr. Product # 674912

#### Additional Description

GOLDEN BAY FLAGGED ITEM INTERNALLY. REDUCE LABOR, WASTE AND GET QUALITY, CONSISTENT RESULTS WITH THESE BROCCOLI FLORETS FROM MONARCH, OUR TOP QUALITY BRAND. WITH COOK TO ORDER CAPABILITY AND FLORETS OF 1.5-2" IN DIAMETER AND 2-3" IN LENGTH, YOUR DISHES WILL SHINE. PRODUCT OF MEXICO, GUATEMALA, AND ECUADOR.

#### Ingredients

BROCCOLI

#### Product Information

Class: 26 - GROCERY, REF & FZN

Category: 222 - VEGETABLES, FZN

Group: 1517 - BROCCOLI, FROZEN

### Preparation & Cooking

#### Preparations and Cooking Instructions

SAUTE, STEAM OR LIGHTLY BOIL. STIR IN BUTTER AND DESIRED SEASONING FOR A UNIQUE FLAVOR.

#### Handling Instructions

KEEP FROZEN UNTIL READY TO USE.

#### Serving Suggestions:

CAN BE USED AS A SIDE DISH OR IN A RECIPE WHERE BROCCOLI IS REQUIRED



# FLORET GRADE A IMPORTED IQF FROZEN

MONARCH

12/2 LB

Manufacturer: MONARCH

# 1340652

Manufacturer Product #: 674912

## Nutritional Facts

Serving Size g (85GH)

Servings Per Container 132

Amount Per Serving

Calories 30

Calories from Fat 0

% Daily Value \*

Total Fat 0g 0%

Saturated Fat 0g 0%

Trans Fat 0g

Cholesterol 0mg 0%

Sodium 20mg 1%

Total Carbohydrate 4g 1%

Dietary Fiber 2g 8%

Sugars 2g

Protein 1g

Vitamin A 0%

Vitamin C 50%

Calcium 2%

Iron 0%

\* Percent Daily Values are based on a 2,000 calorie diet. Your daily values may be higher or lower depending on your calorie needs:

	Calories	2,000	2,500
Total Fat	Less than	65g	80g
Sat Fat	Less than	20g	25g
Cholesterol	Less than	300mg	300mg
Sodium	Less than	2400mg	2400mg
Total Carbohydrate		300g	375mg
Dietary Fiber		25g	30mg

## Supplemental Facts

% Daily Value \*

Polyunsaturated Fat 0 g

Monosaturated Fat 0 g

Potassium 0 mg 0%

\* Percent Daily Values are based on a 2,000 calorie diet. Your daily values may be higher or lower depending on your calorie needs.

## Allergens

ALLERGEN	DOES NOT CONTAIN	CONTAIN	MAY CONTAIN	NO DATA
Crustacean	•			
Eggs	•			
Fish	•			
Gluten				•
Lactose				•
Milk	•			
Mustard				•
Peanuts	•			
Soy	•			
Tree nuts	•			
Wheat	•			

## Marketing Claims

- This product is kosher

## Nutritional Disclaimer

The nutritional and ingredient information provided is based on data US Foods, Inc. receives from manufacturers and may include information derived from third-party sources such as the United States Department of Agriculture. The information provided is representative and, as a result, there may be some slight differences between the information posted and the information on the product label with respect to ingredients and/or nutritional values. The most accurate and up to date source for product information is on the product label. US Foods, Inc. neither assumes any legal liability nor makes any warranty or guaranty, either express or implied, regarding the completeness, accuracy or usefulness of this information. Product images are provided for reference only and may not reflect current packaging.





PACKER

# Carrot

BABY WHOLE PEELED SLIM FRESH

# 4204491



4/5 LB

## Product Description

### Additional Description

CARROT, BABY WHL PLD SLIM

### Ingredients

CARROT

### Product Information

**Class:** 25 - PRODUCE, FRESH

**Category:** 354 - ROOT VEGETABLES, FRESH

**Group:** 2288 - CARROTS, FRESH, VALUE ADDED



# BABY WHOLE PEELED SLIM FRESH

PACKER

4/5 LB

# 4204491

## Nutritional Facts

Serving Size G (78G)  
Servings Per Container

Amount Per Serving

Calories 30 Calories from Fat 0

% Daily Value \*

Total Fat 0G 0%

Saturated Fat 0G

Trans Fat 0G

Cholesterol 0mg 0%

Sodium 60mg 3%

Total Carbohydrate 7G 2%

Dietary Fiber 2G 8%

Sugars 5G

Protein 1G

Vitamin A 110%

Vitamin C 10%

Calcium 2%

Iron 2%

\* Percent Daily Values are based on a 2,000 calorie diet. Your daily values may be higher or lower depending on your calorie needs:

	Calories	2,000	2,500
Total Fat	Less than	65g	80g
Sat Fat	Less than	20g	25g
Cholesterol	Less than	300mg	300mg
Sodium	Less than	2400mg	2400mg
Total Carbohydrate		300g	375mg
Dietary Fiber		25g	30mg

## Supplemental Facts

% Daily Value \*

None Specified at this time

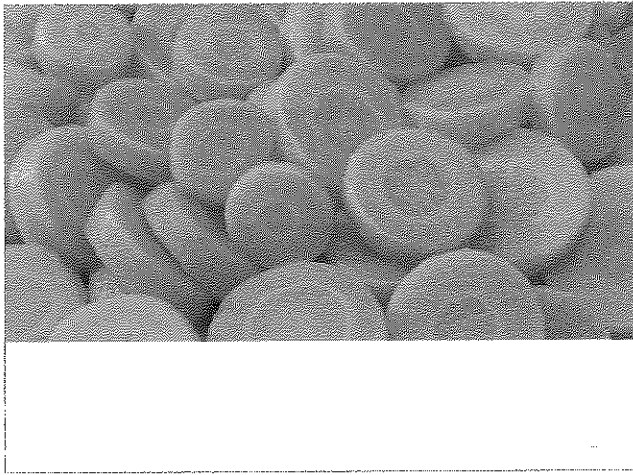
\* Percent Daily Values are based on a 2,000 calorie diet. Your daily values may be higher or lower depending on your calorie needs.

## Allergens

ALLERGEN	DOES NOT CONTAIN	CONTAIN	MAY CONTAIN	NO DATA
Crustacean				•
Eggs				•
Fish				•
Gluten				•
Lactose				•
Milk				•
Mustard				•
Peanuts				•
Soy				•
Tree nuts				•
Wheat				•

## Nutritional Disclaimer

The nutritional and ingredient information provided is based on data US Foods, Inc. receives from manufacturers and may include information derived from third-party sources such as the United States Department of Agriculture. The information provided is representative and, as a result, there may be some slight differences between the information posted and the information on the product label with respect to ingredients and/or nutritional values. The most accurate and up to date source for product information is on the product label. US Foods, Inc. neither assumes any legal liability nor makes any warranty or guaranty, either express or implied, regarding the completeness, accuracy or usefulness of this information. Product images are provided for reference only and may not reflect current packaging.



HARVEST VALUE

## Carrot

COIN CUT 5/16" IQF FROZEN

# 2328441

12/2 LB

### Product Description

Manufacturer: HARVEST VALUE, Mfr. Product # 672087

#### Additional Description

GRADE B HOMESTYLE RANDOM SLICES

#### Ingredients

CARROTS

#### Product Information

Class: 26 - GROCERY, REF & FZN

Category: 222 - VEGETABLES, FZN

Group: 1531 - CARROTS, FROZEN

### Preparation & Cooking

#### Preparations and Cooking Instructions

ITEM MAY BE STEAMED, BOILED, SAUTEED FROM FROZEN AND HELD UNDER HEAT OR SERVED IMMEDIATELY. DO NOT REFREEZE.

#### Handling Instructions

KEEP FROZEN, 24 MONTHS SHELF LIFE.

#### Serving Suggestions:

SERVE AS A SIDE DISH ACCOMPANYING YOUR SIGNATURE CENTER OF THE PLATE RECIPES



## COIN CUT 5/16" IQF FROZEN

HARVEST VALUE

12/2 LB

# 2328441

Manufacturer: HARVEST VALUE

Manufacturer Product #: 672087

### Nutritional Facts

Serving Size (85G)

Servings Per Container 132

Amount Per Serving

Calories 30

Calories from Fat 0

% Daily Value \*

Total Fat .5g 1%

Saturated Fat 0g 1%

Trans Fat 0g

Cholesterol 0mg 0%

Sodium 50mg 2%

Total Carbohydrate 7g 2%

Dietary Fiber 3g 11%

Sugars 4g

Protein 0g

Vitamin A 290%

Vitamin C 2%

Calcium 2%

Iron 2%

\* Percent Daily Values are based on a 2,000 calorie diet. Your daily values may be higher or lower depending on your calorie needs:

	Calories	2,000	2,500
Total Fat	Less than	65g	80g
Sat Fat	Less than	20g	25g
Cholesterol	Less than	300mg	300mg
Sodium	Less than	2400mg	2400mg
Total Carbohydrate		300g	375mg
Dietary Fiber		25g	30mg

### Supplemental Facts

% Daily Value \*

Polyunsaturated Fat 0 g

Monosaturated Fat 0 g

\* Percent Daily Values are based on a 2,000 calorie diet. Your daily values may be higher or lower depending on your calorie needs.

### Allergens

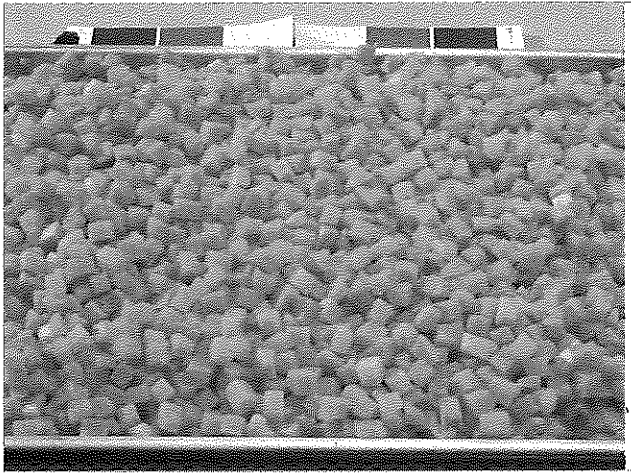
ALLERGEN	DOES NOT CONTAIN	CONTAIN	MAY CONTAIN	NO DATA
Crustacean	•			
Eggs	•			
Fish	•			
Gluten				•
Lactose				•
Milk	•			
Mustard				•
Peanuts	•			
Soy	•			
Tree nuts	•			
Wheat	•			

### Marketing Claims

- This product is kosher

### Nutritional Disclaimer

The nutritional and ingredient information provided is based on data US Foods, Inc. receives from manufacturers and may include information derived from third-party sources such as the United States Department of Agriculture. The information provided is representative and, as a result, there may be some slight differences between the information posted and the information on the product label with respect to ingredients and/or nutritional values. The most accurate and up to date source for product information is on the product label. US Foods, Inc. neither assumes any legal liability nor makes any warranty or guaranty, either express or implied regarding the completeness, accuracy or usefulness of this information. Product images are provided for reference only and may not reflect current packaging.



HARVEST VALUE

## Carrot

DICED 3/8" CANNED

# 9329251

6#10 CN

### Product Description

Manufacturer: HARVEST VALUE, Mfr. Product # 173004

#### Additional Description

CARROTS, DICED, CANNED 3/8"X3/8"X3/8" CUT. MIDWEST ORIGIN PACK.

#### Ingredients

CARROTS, WATER, SALT, AND CALCIUM CHLORIDE.

#### Product Information

Class: 17 - FRUITS & VEGETABLES, CANNED & DRIED

Category: 143 - VEGETABLES, CANNED

Group: 1530 - CARROTS, CANNED

### Preparation & Cooking

#### Preparations and Cooking Instructions

HEAT & SERVE

#### Handling Instructions

Store in dry storage.

#### Serving Suggestions:

SIDE DISH, SOUP, STEWS.



## DICED 3/8" CANNED

HARVEST VALUE

6/#10 CN

# 9329251

Manufacturer: HARVEST VALUE

Manufacturer Product #: 173004

### Nutritional Facts

Serving Size g (132g)  
Servings Per Container

Amount Per Serving  
Calories 25

Calories from Fat 0

% Daily Value \*

Total Fat 0g	0%
Saturated Fat 0g	0%
Trans Fat 0g	
Cholesterol 0mg	0%
Sodium 210mg	9%
Total Carbohydrate 5g	2%
Dietary Fiber 2g	8%
Sugars 2g	
Protein 0g	
Vitamin A	60%
Vitamin C	0%
Calcium	2%
Iron	10%

\* Percent Daily Values are based on a 2,000 calorie diet. Your daily values may be higher or lower depending on your calorie needs:

		Calories	2,000	2,500
Total Fat	Less than	65g	80g	
Sat Fat	Less than	20g	25g	
Cholesterol	Less than	300mg	300mg	
Sodium	Less than	2400mg	2400mg	
Total Carbohydrate		300g	375mg	
Dietary Fiber		25g	30mg	

### Supplemental Facts

% Daily Value \*

Vitamin D 0 IU  
Vitamin E .73  
Vitamin B12 0 mcg  
Vitamin B6 .11 mg

\* Percent Daily Values are based on a 2,000 calorie diet. Your daily values may be higher or lower depending on your calorie needs.

### Allergens

ALLERGEN	DOES NOT CONTAIN	CONTAIN	MAY CONTAIN	NO DATA
Crustacean	•			
Eggs	•			
Fish	•			
Gluten				•
Lactose				•
Milk	•			
Mustard				•
Peanuts	•			
Soy	•			
Tree nuts	•			
Wheat	•			

### Nutritional Claims

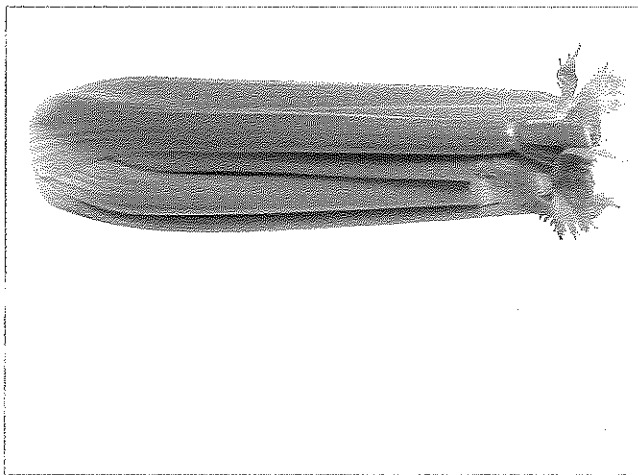
- This product is trans fat free

### Marketing Claims

- This product is kosher

### Nutritional Disclaimer

The nutritional and ingredient information provided is based on data US Foods, Inc. receives from manufacturers and may include information derived from third-party sources such as the United States Department of Agriculture. The information provided is representative and, as a result, there may be some slight differences between the information posted and the information on the product label with respect to ingredients and/or nutritional values. The most accurate and up to date source for product information is on the product label. US Foods, Inc. neither assumes any legal liability nor makes any warranty or guaranty, either express or implied, regarding the completeness, accuracy or usefulness of this information. Product images are provided for reference only and may not reflect current packaging.



CROSS VALLEY FARMS

## Celery

STALK FRESH REF

# 4725396



6 EA

### Product Description

Manufacturer: CROSS VALLEY FARMS, Mfr. Product # 279433

#### Additional Description

CELERY IS A VERSATILE VEGETABLE. RAW CELERY ADDS CRUNCH TO SALADS, CAN BE EATEN AS A SNACK FOOD, OR APPETIZER. EXCELLENT SOURCE OF VITAMIN C, LOW IN CALORIES. SIZE IS DETERMINED BY THE NUMBER OF BUNCHES PER CONTAINER. STORE AT 32-35 DEGREES F.

#### Ingredients

CELERY

#### Product Information

Class: 25 - PRODUCE, FRESH

Category: 356 - WET VEGETABLES, FRESH (NOT LETTUCE)

Group: 2304 - CELERY, FRESH

### Preparation & Cooking

#### Preparations and Cooking Instructions

CAN BE EATEN RAW, MICROWAVED, STIR-FRIED, BRAISED, OR STEAMED.

#### Handling Instructions

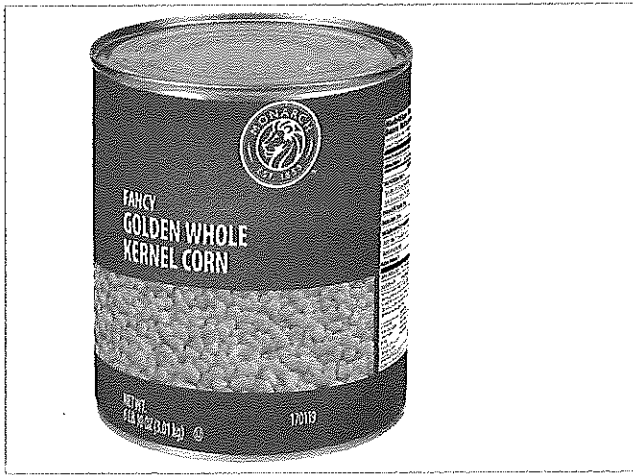
KEEP CELERY AWAY FROM ETHYLENE PRODUCING FRUITS. IF DISCOLORED OR DAMAGED RIBS MUST BE REMOVED FROM THE STALK, TRACE DAMAGED RIB DOWN TO THE BUTT END AND TRIM OUT WITH THE POINT OF A KNIFE. IDEAL STORAGE TEMPERATURE 33-39 DEGREES F.

#### Serving Suggestions:

USED IN VEGGIE TRAYS, SALAD BARS, STEAMED, OR BROILED.







MONARCH-D

## Corn

WHOLE KERNEL GOLDEN FANCY CANNED

# 6330088

6/#10 CN

### Product Description

Manufacturer: MONARCH-D, Mfr. Product # 170119

#### Additional Description

MEETS OR EXCEEDS THE FOODSERVICE INDUSTRY STANDARDS - DISTINCTLY DIFFERENT. GRADE A, CANNED SWEET CORN IS THE PRODUCT PREPARED FROM CLEAN, SOUND KERNELS OF SWEET CORN. MINIMUM DRAINED IS 70 OZ. NO GRADE B SAMPLES IN THE LOT.

#### Ingredients

CORN, WATER, SUGAR, SALT.

#### Product Information

Class: 17 - FRUITS & VEGETABLES, CANNED & DRIED

Category: 143 - VEGETABLES, CANNED

Group: 1611 - CORN, CANNED

### Preparation & Cooking

#### Preparations and Cooking Instructions

HEAT AND SERVE

#### Handling Instructions

REFRIGERATE AFTER OPENING.

#### Serving Suggestions:

SIDE DISH OR INGREDIENT



# WHOLE KERNEL GOLDEN FANCY CANNED

MONARCH-D

6/#10 CN

Manufacturer: MONARCH-D

# 6330088

Manufacturer Product #: 170119

## Nutritional Facts

Serving Size g (125g)

Servings Per Container 144

Amount Per Serving

Calories 80

Calories from Fat 10

% Daily Value \*

Total Fat 1g

2%

Saturated Fat 0g

0%

Trans Fat 0g

Cholesterol 0mg

0%

Sodium 300mg

13%

Total Carbohydrate 17g

6%

Dietary Fiber 2g

8%

Sugars 4g

Protein 2g

Vitamin A

0%

Vitamin C

6%

Calcium

0%

Iron

0%

\* Percent Daily Values are based on a 2,000 calorie diet. Your daily values may be higher or lower depending on your calorie needs:

		Calories	2,000	2,500
Total Fat	Less than	65g	80g	
Sat Fat	Less than	20g	25g	
Cholesterol	Less than	300mg	300mg	
Sodium	Less than	2400mg	2400mg	
Total Carbohydrate		300g	375mg	
Dietary Fiber		25g	30mg	

## Supplemental Facts

% Daily Value \*

Vitamin D 0 IU

Vitamin E .03

Vitamin B12 0 mcg

Vitamin B6 .03 mg

\* Percent Daily Values are based on a 2,000 calorie diet. Your daily values may be higher or lower depending on your calorie needs.

## Allergens

ALLERGEN	DOES NOT CONTAIN	CONTAIN	MAY CONTAIN	NO DATA
Crustacean	•			
Eggs	•			
Fish	•			
Gluten				•
Lactose				•
Milk	•			
Mustard				•
Peanuts	•			
Soy	•			
Tree nuts	•			
Wheat	•			

## Nutritional Claims

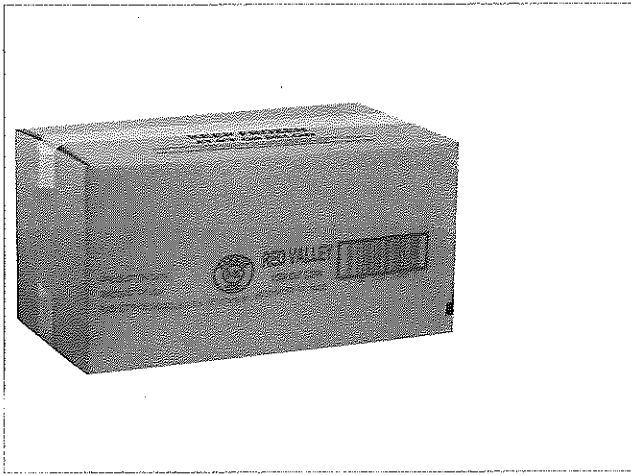
- This product is cholesterol free

## Marketing Claims

- This product is kosher

## Nutritional Disclaimer

The nutritional and ingredient information provided is based on data US Foods, Inc. receives from manufacturers and may include information derived from third-party sources such as the United States Department of Agriculture. The information provided is representative and, as a result, there may be some slight differences between the information posted and the information on the product label with respect to ingredients and/or nutritional values. The most accurate and up to date source for product information is on the product label. US Foods, Inc. neither assumes any legal liability nor makes any warranty or guaranty, either express or implied regarding the completeness, accuracy or usefulness of this information. Product images are provided for reference only and may not reflect current packaging.



RED VALLEY

**Corn**

**KERNEL YELLOW FROZEN**

# 6784508



20 LB

## Product Description

Manufacturer: BONDUELLE USA INC, Mfr. Product # 13000

### Additional Description

DOMESTIC RED VALLEY CUT CORN.

### Ingredients

CORN

### Product Information

Class: 26 - GROCERY, REF & FZN

Category: 222 - VEGETABLES, FZN

Group: 1612 - CORN, KERNELS, FROZEN

## Preparation & Cooking

### Preparations and Cooking Instructions

Cooking: Place contents in boiling water. Cook until tender. Do not overcook. Season to taste and serve. For food safety and best quality, cook to an internal temperature of 160 degrees F.

### Handling Instructions

Keep frozen below -18 degrees C/0 degrees F. Do not allow contents to thaw.

### Serving Suggestions:

Side dish, pot-au-feu, soup, stew, rice, stuffing, sauce



# KERNEL YELLOW FROZEN

RED VALLEY

20 LB

# 6784508

Manufacturer: BONDUELLE USA INC

Manufacturer Product #: 13000

## Nutritional Facts

Serving Size (85GR)

Servings Per Container 106

Amount Per Serving

Calories 100

Calories from Fat 10

% Daily Value \*

Total Fat 1g

1%

Saturated Fat 0g

0%

Trans Fat 0g

Cholesterol 0mg

0%

Sodium 0mg

0%

Total Carbohydrate 21g

7%

Dietary Fiber 1g

4%

Sugars 5g

Protein 3g

Vitamin A

0%

Vitamin C

6%

Calcium

0%

Iron

0%

\* Percent Daily Values are based on a 2,000 calorie diet. Your daily values may be higher or lower depending on your calorie needs:

		Calories	2,000	2,500
Total Fat	Less than	65g	80g	
Sat Fat	Less than	20g	25g	
Cholesterol	Less than	300mg	300mg	
Sodium	Less than	2400mg	2400mg	
Total Carbohydrate		300g	375mg	
Dietary Fiber		25g	30mg	

## Supplemental Facts

% Daily Value \*

None Specified at this time

\* Percent Daily Values are based on a 2,000 calorie diet. Your daily values may be higher or lower depending on your calorie needs.

## Allergens

ALLERGEN	DOES NOT CONTAIN	CONTAIN	MAY CONTAIN	NO DATA
Crustacean	•			
Eggs	•			
Fish	•			
Gluten				•
Lactose				•
Milk	•			
Mustard				•
Peanuts	•			
Soy	•			
Tree nuts	•			
Wheat	•			

## Nutritional Claims

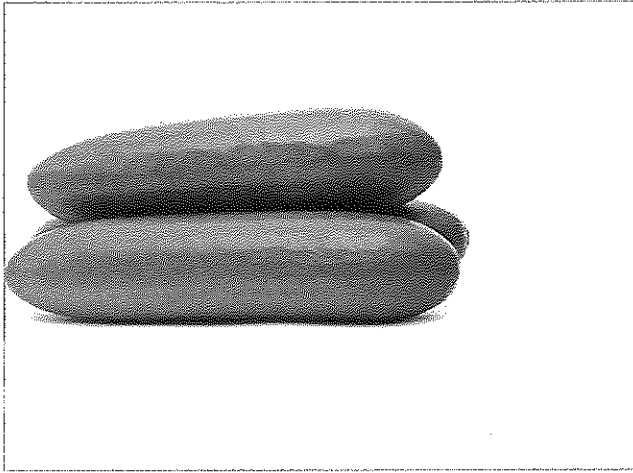
- This product is trans fat free

## Marketing Claims

- This product is kosher

## Nutritional Disclaimer

The nutritional and ingredient information provided is based on data US Foods, Inc. receives from manufacturers and may include information derived from third-party sources such as the United States Department of Agriculture. The information provided is representative and, as a result, there may be some slight differences between the information posted and the information on the product label with respect to ingredients and/or nutritional values. The most accurate and up to date source for product information is on the product label. US Foods, Inc. neither assumes any legal liability nor makes any warranty or guaranty, either express or implied, regarding the completeness, accuracy or usefulness of this information. Product images are provided for reference only and may not reflect current packaging.



CROSS VALLEY FARMS

## Cucumber

FRESH REF

# 4725818



5 LB

### Product Description

Manufacturer: CROSS VALLEY FARMS, Mfr. Product # 279477

#### Additional Description

MEDIUM SIZED #1 CUCUMBERS THAT ARE FRESHLY HARVESTED AND GOOD GREEN COLOR AND GREAT FOR SALADS, GARNISH, AND ANY OTHER USE WHERE CUCUMBERS ARE REQUIRED.

#### Ingredients

CUCUMBER

#### Product Information

Class: 25 - PRODUCE, FRESH

Category: 348 - SQUASH & CUCUMBERS, FRESH

Group: 2343 - CUCUMBERS, FRESH

### Preparation & Cooking

#### Preparations and Cooking Instructions

WASH ALL PRODUCE BEFORE SERVING. CAN BE SERVED FRESH, OR ADDED INTO A MULTITUDE OF RECIPES.

#### Handling Instructions

KEEP CUCUMBERS AWAY FROM ETHYLENE PRODUCING FRUITS. IDEAL STORAGE TEMPERATURE BETWEEN 45-50 DEGREES F. BELOW 40 DEGREES F, PRODUCT WILL DEVELOP SOFT SPOTS AND BREAKDOWN.

#### Serving Suggestions:

USE IN FRESH OR MARINATED SALADS, ON VEGGIE TRAYS, IN COLD SUMMER SOUPS, OR IN TZATZIKI SAUCE.



## FRESH REF

CROSS VALLEY FARMS

5 LB

# 4725818

Manufacturer: CROSS VALLEY FARMS

Manufacturer Product #: 279477

### Nutritional Facts

Serving Size G (99G)  
Servings Per Container

Amount Per Serving  
Calories 10

Calories from Fat 0

% Daily Value \*

Total Fat 0G 0%

Saturated Fat 0G

Trans Fat 0G

Cholesterol 0mg 0%

Sodium 0mg 0%

Total Carbohydrate 2G 1%

Dietary Fiber 1G 4%

Sugars 1G

Protein 1G

Vitamin A 4%

Vitamin C 10%

Calcium 2%

Iron 2%

\* Percent Daily Values are based on a 2,000 calorie diet. Your daily values may be higher or lower depending on your calorie needs:

		Calories	2,000	2,500
Total Fat	Less than	65g	80g	
Sat Fat	Less than	20g	25g	
Cholesterol	Less than	300mg	300mg	
Sodium	Less than	2400mg	2400mg	
Total Carbohydrate		300g	375mg	
Dietary Fiber		25g	30mg	

### Supplemental Facts

% Daily Value \*

None Specified at this time

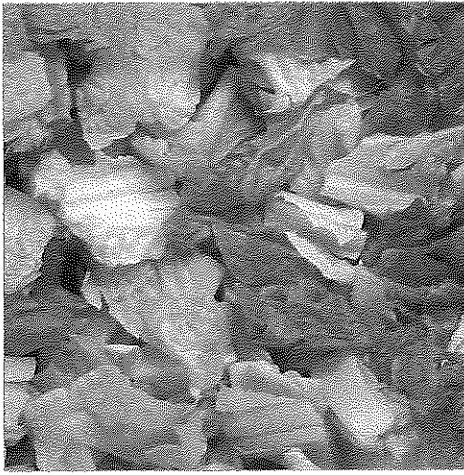
\* Percent Daily Values are based on a 2,000 calorie diet. Your daily values may be higher or lower depending on your calorie needs.

### Allergens

ALLERGEN	DOES NOT CONTAIN	CONTAIN	MAY CONTAIN	NO DATA
Crustacean				•
Eggs				•
Fish				•
Gluten				•
Lactose				•
Milk				•
Mustard				•
Peanuts				•
Soy				•
Tree nuts				•
Wheat				•

### Nutritional Disclaimer

The nutritional and ingredient information provided is based on data US Foods, Inc. receives from manufacturers and may include information derived from third-party sources such as the United States Department of Agriculture. The information provided is representative and, as a result, there may be some slight differences between the information posted and the information on the product label with respect to ingredients and/or nutritional values. The most accurate and up to date source for product information is on the product label. US Foods, Inc. neither assumes any legal liability nor makes any warranty or guaranty, either express or implied regarding the completeness, accuracy or usefulness of this information. Product images are provided for reference only and may not reflect current packaging.



CROSS VALLEY FARMS

## Lettuce

ROMAINE CHOPPED 1 1/4" PILLOW PACK FRESH REF

# 9332230



6/2 LB

### Product Description

Manufacturer: CROSS VALLEY FARMS, Mfr. Product # 020306

#### Additional Description

THIS CLEANED AND 1/4-INCH CHOPPED ROMAINE HAS MEDIUM-TO-DARK GREEN, LONG, CRISP LEAVES WITH FIRM WHITE RIBS ALMOST TO THE TIP OF THE LEAF, AND A SLIGHT BITTER FLAVOR. AS YOU REACH THE CENTER, THE ROMAINE HEART LEAVES ARE SMALLER, YELLOWER AND SWEETER.

#### Ingredients

LETTUCE

#### Product Information

Class: 25 - PRODUCE, FRESH

Category: 207 - LETTUCE, SPINACH & MICRO GREENS, FRESH

Group: 2461 - LETTUCE, ROMAINE, FRESH, VALUE ADDED

### Preparation & Cooking

#### Preparations and Cooking Instructions

LETTUCE IS THE PRIMARY INGREDIENT IN SALADS. USE IN SANDWICHES TO ADD A MODERATELY CRUNCHY TEXTURE. LETTUCE LEAVES CAN ALSO BE USED AS AN ATTRACTIVE GARNISH OR BASE TO SERVE OTHER FOODS, SUCH AS APPETIZERS AND MEATS.

#### Handling Instructions

LEAF LETTUCE IS MORE PERISHABLE THAN HEAD LETTUCE AND MUST BE KEPT AT A LOWER TEMP WITH HIGHER HUMIDITY. WASH THE LOOSER LEAVED VARIETIES BY SEPARATING EACH LEAF AND RINSING EACH LEAF WITH WATER. TEAR LETTUCE TO THE SIZE DESIRED. PAT DRY WITH PAPER TOWELS OR USE A SALAD SPINNER.

#### Serving Suggestions:

SWEETER AND CRUNCHIER THAN MOST OTHER LETTUCES. A GOOD CHOICE FOR ANY SALAD. TRADITIONAL CHOICE FOR CAESAR SALADS.



# ROMAINE CHOPPED 1 1/4" PILLOW PACK FRESH REF

CROSS VALLEY FARMS

6/2 LB

Manufacturer: CROSS VALLEY FARMS

# 9332230

Manufacturer Product #: 020306

## Nutritional Facts

Serving Size g (100g)  
Servings Per Container

Amount Per Serving

Calories 17

Calories from Fat 3

% Daily Value \*

Total Fat .3g .46%

Saturated Fat .03g .2%

Trans Fat 0g

Cholesterol 0mg 0%

Sodium 8mg .33%

Total Carbohydrate 3.29g 1.1%

Dietary Fiber 2.1g 8%

Sugars 1.19g

Protein 1.2g

Vitamin A 174.2%

Vitamin C 40%

Calcium 3.3%

Iron 5.39%

\* Percent Daily Values are based on a 2,000 calorie diet. Your daily values may be higher or lower depending on your calorie needs:

		Calories	2,000	2,500
Total Fat	Less than	65g	80g	
Sat Fat	Less than	20g	25g	
Cholesterol	Less than	300mg	300mg	
Sodium	Less than	2400mg	2400mg	
Total Carbohydrate		300g	375mg	
Dietary Fiber		25g	30mg	

## Supplemental Facts

% Daily Value \*

Vitamin D 0 IU 0%

Folic Acid 136 mcg

Phosphorus 30 mg

Polyunsaturated Fat .16 g

Monosaturated Fat .01 g

Ash .58 g

Copper .05 mg

Magnesium 14 mg

Niacin .31 mg

Pantothenic Acid .14 mcg

Potassium 247 mg

Riboflavin .06 mg

Thiamin .07 mg

Vitamin E .13

Vitamin B12 0 mcg 0%

Vitamin B6 .07 mg 3.7%

Water 94.61 g

Zinc .23 mg

\* Percent Daily Values are based on a 2,000 calorie diet. Your daily values may be higher or lower depending on your calorie needs.

## Allergens

ALLERGEN	DOES NOT CONTAIN	CONTAIN	MAY CONTAIN	NO DATA
Crustacean	•			
Eggs	•			
Fish	•			
Gluten				•
Lactose				•
Milk	•			
Mustard				•
Peanuts	•			
Soy	•			
Tree nuts	•			
Wheat	•			

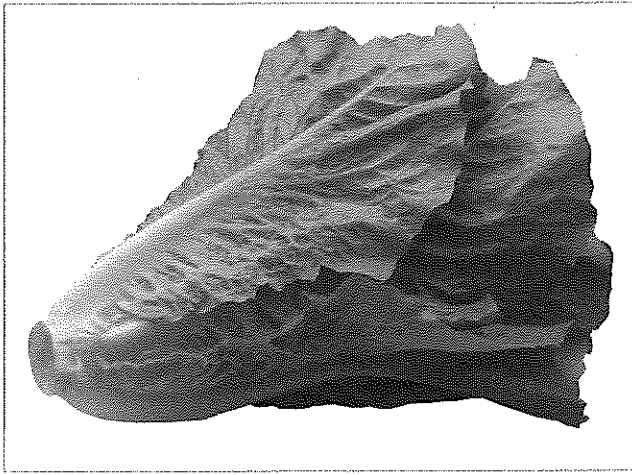
## Marketing Claims

- This product is kosher

## Nutritional Disclaimer

The nutritional and ingredient information provided is based on data US Foods, Inc. receives from manufacturers and may include information derived from third-party sources such as the United States Department of Agriculture. The information provided is representative and, as a result, there may be some slight differences between the information posted and the information on the product label with respect to ingredients and/or nutritional values. The most accurate and up to date source for product information is on the product label. US Foods, Inc. neither assumes any legal liability nor makes any warranty or guaranty, either express or implied, regarding the completeness, accuracy or usefulness of this information. Product images are provided for reference only and may not reflect current packaging.





CROSS VALLEY FARMS

## Lettuce

ROMAINE FRESH REF

# 5326418



24 EA

### Product Description

Manufacturer: CROSS VALLEY FARMS, Mfr. Product # 020296

#### Additional Description

ROMAINE HAS MEDIUM-TO-DARK GREEN, LONG, CRISP LEAVES WITH FIRM WHITE RIBS ALMOST TO THE TIP OF THE LEAF, AND A SLIGHT BITTER FLAVOR. AS YOU REACH THE CENTER, THE ROMAINE HEART LEAVES BECOME SMALLER, MORE YELLOW AND SWEETER.

#### Ingredients

LETTUCE

#### Product Information

Class: 25 - PRODUCE, FRESH

Category: 207 - LETTUCE, SPINACH & MICRO GREENS, FRESH

Group: 2460 - LETTUCE, ROMAINE, FRESH

### Preparation & Cooking

#### Preparations and Cooking Instructions

LETTUCE IS THE PRIMARY INGREDIENT IN SALADS. USE IN SANDWICHES TO ADD A MODERATELY CRUNCHY TEXTURE. LETTUCE LEAVES CAN ALSO BE USED AS AN ATTRACTIVE GARNISH OR BASE TO SERVE OTHER FOODS, SUCH AS APPETIZERS AND MEATS.

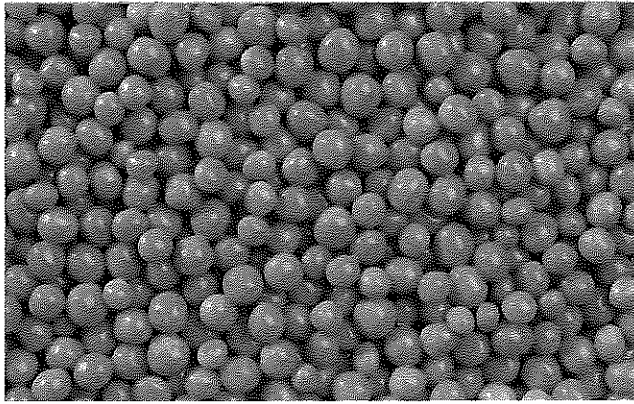
#### Handling Instructions

LEAF LETTUCE IS MORE PERISHABLE THAN HEAD LETTUCE AND MUST BE KEPT AT A LOWER TEMP WITH HIGHER HUMIDITY. WASH THE LOOSER LEAVED VARIETIES BY SEPARATING EACH LEAF AND RINSING EACH LEAF WITH WATER. TEAR LETTUCE TO THE SIZE DESIRED. PAT DRY WITH PAPER TOWELS OR USE A SALAD SPINNER.

#### Serving Suggestions:

SWEETER AND CRUNCHIER THAN MOST OTHER LETTUCES. A GOOD CHOICE FOR ANY SALAD. TRADITIONAL CHOICE FOR CAESAR SALADS.





MONARCH

## Pea

GREEN FANCY IMPORTED & DOMESTIC IQF FROZEN

# 9328071

20 LB

### Product Description

Manufacturer: MONARCH, Mfr. Product # 670019

#### Additional Description

HIGH GRADE A QUALITY. IQF 2-4 SIEVE GREEN PEAS. USE AS A SIDE DISH OR INGREDIENT.

#### Ingredients

PEAS.

#### Product Information

Class: 26 - GROCERY, REF & FZN

Category: 222 - VEGETABLES, FZN

Group: 1784 - PEAS, GREEN, FROZEN

### Preparation & Cooking

#### Preparations and Cooking Instructions

COOK FROM FROZEN, STEAM, SAUTE OR BOIL.

#### Handling Instructions

COOK FROM FROZEN, BEST SERVED SOON AFTER COOKING, DO NOT HOLD ON STEAM TABLE LONGER THAN NECESSARY.

#### Serving Suggestions:

SERVE AS SIDE DISH VEGETABLE, USE IN POT PIES, CASSEROLES OR SOUPS.



# GREEN FANCY IMPORTED & DOMESTIC IQF FROZEN

MONARCH

20 LB

Manufacturer: MONARCH

# 9328071

Manufacturer Product #: 670019

## Nutritional Facts

Serving Size (85G)  
Servings Per Container 106

Amount Per Serving  
Calories 60  
Calories from Fat 0

% Daily Value \*

Total Fat 0g	0%
Saturated Fat 0g	0%
Trans Fat 0g	
Cholesterol 0mg	0%
Sodium 60mg	3%
Total Carbohydrate 12g	4%
Dietary Fiber 5g	19%
Sugars 4g	

Protein 4g

Vitamin A	35%
Vitamin C	14%
Calcium	0%
Iron	8%

\* Percent Daily Values are based on a 2,000 calorie diet. Your daily values may be higher or lower depending on your calorie needs:

		Calories	2,000	2,500
Total Fat	Less than	65g	80g	
Sat Fat	Less than	20g	25g	
Cholesterol	Less than	300mg	300mg	
Sodium	Less than	2400mg	2400mg	
Total Carbohydrate		300g	375mg	
Dietary Fiber		25g	30mg	

## Supplemental Facts

% Daily Value \*

Polyunsaturated Fat 0 g  
Monosaturated Fat 0 g

\* Percent Daily Values are based on a 2,000 calorie diet. Your daily values may be higher or lower depending on your calorie needs.

## Allergens

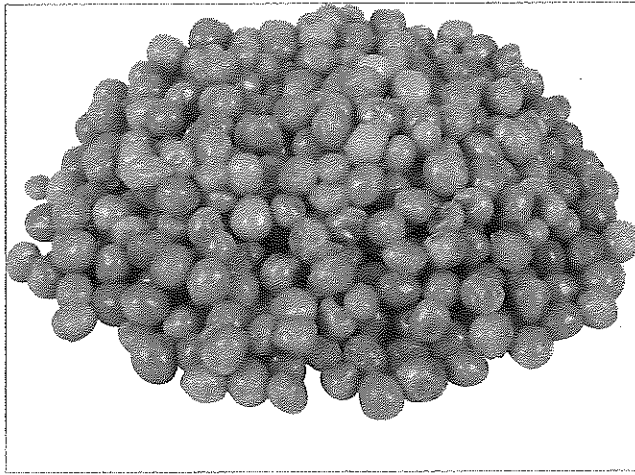
ALLERGEN	DOES NOT CONTAIN	CONTAIN	MAY CONTAIN	NO DATA
Crustacean	•			
Eggs	•			
Fish	•			
Gluten				•
Lactose				•
Milk	•			
Mustard				•
Peanuts	•			
Soy	•			
Tree nuts	•			
Wheat	•			

## Marketing Claims

- This product is kosher

## Nutritional Disclaimer

The nutritional and ingredient information provided is based on data US Foods, Inc. receives from manufacturers and may include information derived from third-party sources such as the United States Department of Agriculture. The information provided is representative and, as a result, there may be some slight differences between the information posted and the information on the product label with respect to ingredients and/or nutritional values. The most accurate and up to date source for product information is on the product label. US Foods, Inc. neither assumes any legal liability nor makes any warranty or guaranty, either express or implied, regarding the completeness, accuracy or usefulness of this information. Product images are provided for reference only and may not reflect current packaging.



HARVEST VALUE

Pea

GREEN SWEET STANDARD CANNED

# 7330061



6/#10 CN

## Product Description

Manufacturer: HARVEST VALUE, Mfr. Product # 170086

### Additional Description

STANDARD GRADE, GREEN PEAS, SOMEWHAT UNIFORMED IN SIZING. THERE SHALL BE NO SUBSTANDARD SAMPLES WITHIN THE LOT.

### Ingredients

GREEN PEAS, WATER, SUGAR, SALT.

### Product Information

Class: 17 - FRUITS & VEGETABLES, CANNED & DRIED

Category: 143 - VEGETABLES, CANNED

Group: 1782 - PEAS, GREEN, CANNED

## Preparation & Cooking

### Preparations and Cooking Instructions

USE DIRECTLY FROM THE CAN.

### Handling Instructions

SHELF STABLE - ONCE OPENED, REMOVE FROM CAN AND REFRIGERATE AS NEEDED.

### Serving Suggestions:

SERVE AS SIDE DISH VEGETABLE, USE IN POT PIES, CASSEROLES OR SOUPS



# GREEN SWEET STANDARD CANNED

HARVEST VALUE

6/#10 CN

# 7330061

Manufacturer: HARVEST VALUE

Manufacturer Product #: 170086

## Nutritional Facts

Serving Size g (125g)	
Servings Per Container 144	
Amount Per Serving	
Calories 70	Calories from Fat 5
% Daily Value *	
Total Fat .5g	1%
Saturated Fat 0g	0%
Trans Fat 0g	
Cholesterol 0mg	0%
Sodium 350mg	15%
Total Carbohydrate 12g	4%
Dietary Fiber 3g	12%
Sugars 6g	
Protein 4g	
Vitamin A	6%
Vitamin C	20%
Calcium	2%
Iron	8%

\* Percent Daily Values are based on a 2,000 calorie diet. Your daily values may be higher or lower depending on your calorie needs:

	Calories	2,000	2,500
Total Fat	Less than	65g	80g
Sat Fat	Less than	20g	25g
Cholesterol	Less than	300mg	300mg
Sodium	Less than	2400mg	2400mg
Total Carbohydrate		300g	375mg
Dietary Fiber		25g	30mg

## Supplemental Facts

% Daily Value *	
Vitamin D 0 IU	
Vitamin E .02	
Vitamin B12 0 mcg	
Vitamin B6 .06 mg	

\* Percent Daily Values are based on a 2,000 calorie diet. Your daily values may be higher or lower depending on your calorie needs.

## Allergens

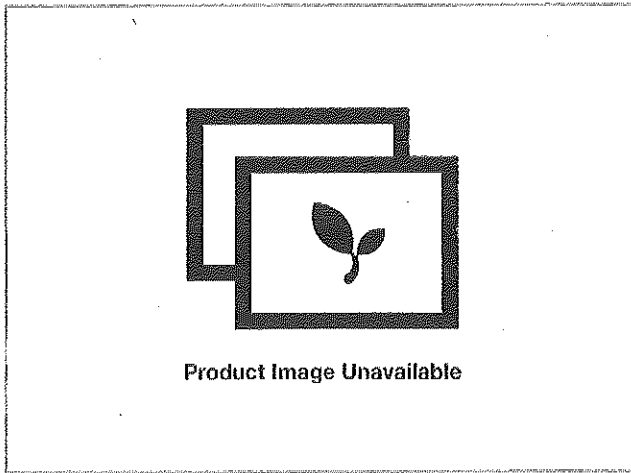
ALLERGEN	DOES NOT CONTAIN	CONTAIN	MAY CONTAIN	NO DATA
Crustacean	•			
Eggs	•			
Fish	•			
Gluten				•
Lactose				•
Milk	•			
Mustard				•
Peanuts	•			
Soy	•			
Tree nuts	•			
Wheat	•			

## Marketing Claims

- This product is kosher

## Nutritional Disclaimer

The nutritional and ingredient information provided is based on data US Foods, Inc. receives from manufacturers and may include information derived from third-party sources such as the United States Department of Agriculture. The information provided is representative and, as a result, there may be some slight differences between the information posted and the information on the product label with respect to ingredients and/or nutritional values. The most accurate and up to date source for product information is on the product label. US Foods, Inc. neither assumes any legal liability nor makes any warranty or guaranty, either express or implied, regarding the completeness, accuracy or usefulness of this information. Product images are provided for reference only and may not reflect current packaging.



MONARCH

## Pickle

DILL CRINKLE-CUT CHIP 2000-2500 COUNT 3/16" PAIL  
SHELF STABLE

# 6199833



5 GA

### Product Description

Manufacturer: MONARCH, Mfr. Product # 567674

#### Additional Description

CRINKLE CUT PICKLE CHIPS MADE FROM CRUNCHY FERMENTED CUCUMBERS AND A CUSTOM BRINE THAT COMBINES A BALANCED BLEND DILL, GARLIC AND SPICES. THESE ARE ALSO REFERRED TO AS HAMBURGER SLICES. KOSHER CIRCLE U.

#### Ingredients

CUCUMBERS, WATER, VINEGAR, SALT, CONTAINS LESS THAN 2% OF CALCIUM CHLORIDE, POTASSIUM SORBATE (PRESERVATIVE), NATURAL FLAVORS, POLYSORBATE 80, YELLOW 5.

#### Product Information

Class: 22 - GROCERY, DRY

Category: 233 - OLIVES, PICKLES, PEPPERS & COCKTAIL ONIONS, SHELF

Group: 1790 - PICKLES, WHOLE & SLICED, SHELF STABLE

### Preparation & Cooking

#### Preparations and Cooking Instructions

READY TO USE.

#### Handling Instructions

STORE UNOPENED IN A COOL DRY PLACE. REFRIGERATE AFTER OPENING.

#### Serving Suggestions:

ADD ZEST AND FLAVOR TO HAMBURGERS AND OTHER SANDWICHES. KEEPS CRUNCH AND FIRM TEXTURE EVEN ON HOT SANDWICHES.



# DILL CRINKLE-CUT CHIP 2000-2500 COUNT 3/16" PAIL SHELF STABLE

MONARCH

5 GA

Manufacturer: MONARCH

# 6199833

Manufacturer Product #: 567674

## Nutritional Facts

Serving Size (28G)

Servings Per Container 357

Amount Per Serving

Calories 5

Calories from Fat 0

% Daily Value \*

Total Fat 0g 0%

Saturated Fat 0g 0%

Trans Fat 0g

Cholesterol 0mg 0%

Sodium 370mg 15%

Total Carbohydrate 0g 0%

Dietary Fiber 0g 0%

Sugars 0g

Protein 0g

Vitamin A 0%

Vitamin C 0%

Calcium 0%

Iron 0%

\* Percent Daily Values are based on a 2,000 calorie diet. Your daily values may be higher or lower depending on your calorie needs:

		Calories	2,000	2,500
Total Fat	Less than	65g	80g	
Sat Fat	Less than	20g	25g	
Cholesterol	Less than	300mg	300mg	
Sodium	Less than	2400mg	2400mg	
Total Carbohydrate		300g	375mg	
Dietary Fiber		25g	30mg	

## Supplemental Facts

% Daily Value \*

Polyunsaturated Fat 0 g

Monosaturated Fat 0 g

Potassium 25 mg 1%

\* Percent Daily Values are based on a 2,000 calorie diet. Your daily values may be higher or lower depending on your calorie needs.

## Allergens

ALLERGEN	DOES NOT CONTAIN	CONTAIN	MAY CONTAIN	NO DATA
Crustacean	•			
Eggs	•			
Fish	•			
Gluten				•
Lactose				•
Milk	•			
Mustard				•
Peanuts	•			
Soy	•			
Tree nuts	•			
Wheat	•			

## Marketing Claims

- This product is kosher

## Nutritional Disclaimer

The nutritional and ingredient information provided is based on data US Foods, Inc. receives from manufacturers and may include information derived from third-party sources such as the United States Department of Agriculture. The information provided is representative and, as a result, there may be some slight differences between the information posted and the information on the product label with respect to ingredients and/or nutritional values. The most accurate and up to date source for product information is on the product label. US Foods, Inc. neither assumes any legal liability nor makes any warranty or guaranty, either express or implied, regarding the completeness, accuracy or usefulness of this information. Product images are provided for reference only and may not reflect current packaging.





MONARCH

## Pickle

GHERKIN SWEET WHOLE 155-220 COUNT RANDOM SIZE  
PLASTIC JAR SHELF STA

# 1272225



4/1 GA

RECEIVED

### Product Description

Manufacturer: MONARCH, Mfr. Product # 570397

#### Additional Description

CRUNCHY, SMALL, WHOLE PICKLED CUCUMBERS ARE COMBINED WITH A CUSTOM BALANCED BLEND OF SUGARS AND SPICES. KOSHER CIRCLE U.

#### Ingredients

CUCUMBERS, SUGAR, WATER, VINEGAR, CONTAINS LESS THAN 2% OF SALT, CALCIUM CHLORIDE, SODIUM BENZOATE (PRESERVATIVE), ALUM, NATURAL FLAVOR, POLYSORBATE 80, YELLOW 5.

#### Product Information

Class: 22 - GROCERY, DRY

Category: 233 - OLIVES, PICKLES, PEPPERS & COCKTAIL ONIONS, SHELF

Group: 1790 - PICKLES, WHOLE & SLICED, SHELF STABLE

### Preparation & Cooking

#### Preparations and Cooking Instructions

READY TO USE.

#### Handling Instructions

STORE UNOPENED IN A COOL DRY PLACE. REFRIGERATE AFTER OPENING.

#### Serving Suggestions:

STORE UNOPENED IN A COOL DRY PLACE. REFRIGERATE AFTER OPENING.



# GHERKIN SWEET WHOLE 155-220 COUNT RANDOM SIZE PLASTIC JAR SHELF STA

MONARCH

4/1 GA

Manufacturer: MONARCH

# 1272225

Manufacturer Product #: 570397

## Nutritional Facts

Serving Size (28G)

Servings Per Container 328

Amount Per Serving

Calories 30

Calories from Fat 0

% Daily Value \*

Total Fat 0g 0%

Saturated Fat 0g

Trans Fat 0g

Cholesterol 0mg 0%

Sodium 190mg 8%

Total Carbohydrate 7g 2%

Dietary Fiber 0g 0%

Sugars 7g

Protein 0g

Vitamin A 0%

Vitamin C 0%

Calcium 4%

Iron 0%

\* Percent Daily Values are based on a 2,000 calorie diet. Your daily values may be higher or lower depending on your calorie needs:

		Calories	2,000	2,500
Total Fat	Less than	65g	80g	
Sat Fat	Less than	20g	25g	
Cholesterol	Less than	300mg	300mg	
Sodium	Less than	2400mg	2400mg	
Total Carbohydrate		300g	375mg	
Dietary Fiber		25g	30mg	

## Supplemental Facts

% Daily Value \*

Polysaturated Fat 0 g

Monosaturated Fat 0 g

\* Percent Daily Values are based on a 2,000 calorie diet. Your daily values may be higher or lower depending on your calorie needs.

## Allergens

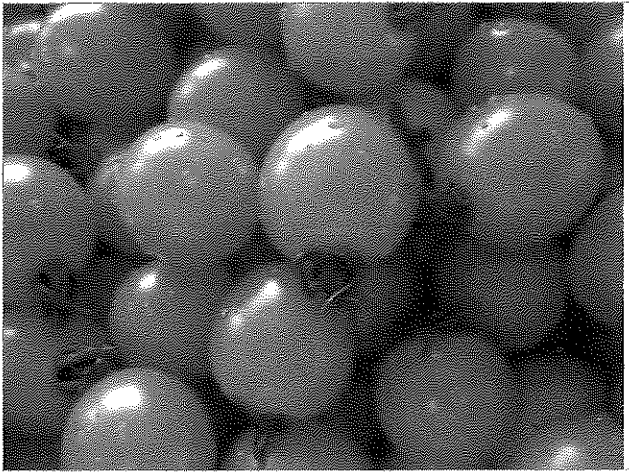
ALLERGEN	DOES NOT CONTAIN	CONTAIN	MAY CONTAIN	NO DATA
Crustacean	•			
Eggs	•			
Fish	•			
Gluten				•
Lactose				•
Milk	•			
Mustard				•
Peanuts	•			
Soy	•			
Tree nuts	•			
Wheat	•			

## Marketing Claims

- This product is kosher

## Nutritional Disclaimer

The nutritional and ingredient information provided is based on data US Foods, Inc. receives from manufacturers and may include information derived from third-party sources such as the United States Department of Agriculture. The information provided is representative and, as a result, there may be some slight differences between the information posted and the information on the product label with respect to ingredients and/or nutritional values. The most accurate and up to date source for product information is on the product label. US Foods, Inc. neither assumes any legal liability nor makes any warranty or guaranty, either express or implied regarding the completeness, accuracy or usefulness of this information. Product images are provided for reference only and may not reflect current packaging.



CROSS VALLEY FARMS

## Tomato

CHERRY RED CUP FRESH REF

# 8353773



12/1 PT

### Product Description

Manufacturer: CROSS VALLEY FARMS, Mfr. Product # 044158

#### Additional Description

RIPE WHEN DEEP RED COLOR. 12/1 PINT CUPS STORE OUTSIDE COOLER. 350-450/CS

#### Ingredients

TOMATO

#### Product Information

Class: 25 - PRODUCE, FRESH

Category: 211 - TOMATOES, FRESH

Group: 2684 - TOMATOES, CHERRY, GRAPE, FRESH

### Preparation & Cooking

#### Preparations and Cooking Instructions

WASH ALL PRODUCE BEFORE SERVING. TOMATOES CAN BE SERVED FRESH, OR ADDED INTO A MULTITUDE OF RECIPES.

#### Handling Instructions

OPTIMAL TEMPERATURE TO MAINTAIN FRESHNESS AND TASTE IS 50 DEGREES F, REFRIGERATING BELOW 45 DEGREES F DAMAGES CELL STRUCTURE AND FLAVOR PROFILE; HOWEVER, TOMATOES CUT OR PUREED MUST BE REFRIGERATED TO MINIMIZE MICROBIAL GROWTH.

#### Serving Suggestions:

USE FOR A GARNISH OR TO ADD COLOR TO YOUR SALADS. GREAT WITH FRESH MOZZARELLA, BASIL, OLIVE OIL, AND BALSAMIC VINEGAR. USE FOR K-BOBS.



## CHERRY RED CUP FRESH REF

CROSS VALLEY FARMS

12/1 PT

# 8353773

Manufacturer: CROSS VALLEY FARMS

Manufacturer Product #: 044158

### Nutritional Facts

Serving Size G (148G)  
Servings Per Container

Amount Per Serving

Calories 25

Calories from Fat 0

% Daily Value \*

Total Fat 0G

0%

Saturated Fat 0G

Trans Fat 0G

Cholesterol 0mg

0%

Sodium 20mg

1%

Total Carbohydrate 5G

2%

Dietary Fiber 1G

4%

Sugars 3G

Protein 1G

Vitamin A

20%

Vitamin C

40%

Calcium

2%

Iron

4%

\* Percent Daily Values are based on a 2,000 calorie diet. Your daily values may be higher or lower depending on your calorie needs:

	Calories	2,000	2,500
Total Fat	Less than	65g	80g
Sat Fat	Less than	20g	25g
Cholesterol	Less than	300mg	300mg
Sodium	Less than	2400mg	2400mg
Total Carbohydrate		300g	375mg
Dietary Fiber		25g	30mg

### Supplemental Facts

% Daily Value \*

None Specified at this time

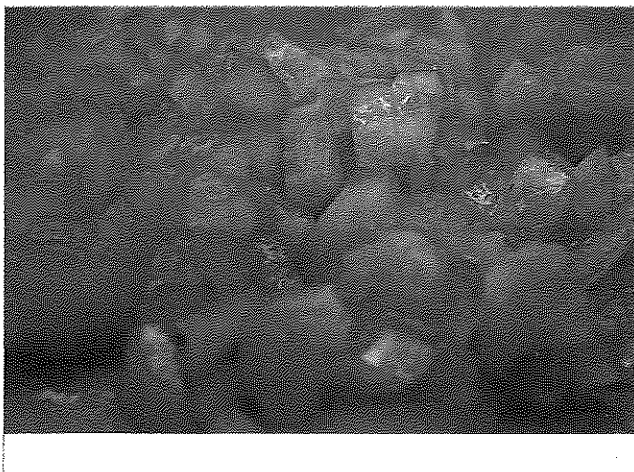
\* Percent Daily Values are based on a 2,000 calorie diet. Your daily values may be higher or lower depending on your calorie needs

### Allergens

ALLERGEN	DOES NOT CONTAIN	CONTAIN	MAY CONTAIN	NO DATA
Crustacean				•
Eggs				•
Fish				•
Gluten				•
Lactose				•
Milk				•
Mustard				•
Peanuts				•
Soy				•
Tree nuts				•
Wheat				•

### Nutritional Disclaimer

The nutritional and ingredient information provided is based on data US Foods, Inc. receives from manufacturers and may include information derived from third-party sources such as the United States Department of Agriculture. The information provided is representative and, as a result, there may be some slight differences between the information posted and the information on the product label with respect to ingredients and/or nutritional values. The most accurate and up to date source for product information is on the product label. US Foods, Inc. neither assumes any legal liability nor makes any warranty or guaranty, either express or implied, regarding the completeness, accuracy or usefulness of this information. Product images are provided for reference only and may not reflect current packaging.



CROSS VALLEY FARMS

## Tomato

ROUND DICED 1/4" FRESH REF

# 6579338



2/5 LB

### Product Description

Manufacturer: CROSS VALLEY FARMS, Mfr. Product # 449533

#### Additional Description

THE CROSS VALLEY FARMS 1/4" DICED RED TOMATO IS A VALUE ADDED FRESH TOMATO ITEM THAT PROVIDES THE SAFEST ALTERNATIVE TO THE WHOLE TOMATO. IT IS CUT AND PACKAGED UNDER STRICT FOOD SAFETY REQUIREMENTS AND CVF QUALITY SPECS.

#### Ingredients

TOMATOES.

#### Product Information

Class: 25 - PRODUCE, FRESH

Category: 211 - TOMATOES, FRESH

Group: 2685 - TOMATOES, FRESH, VALUE ADDED

### Preparation & Cooking

#### Preparations and Cooking Instructions

Simply open the sealed container, take out the required amount, and reseal or cover the container that holds the remaining diced tomatoes. The end result is uniformity, quality, safety, and consistency every time!

#### Handling Instructions

Store in coldest part of cooler (33 - 38F) and take out of cooler only when ready to use or serve. No knives in hands of employees, no waste, labor savings, consistency, uniformity, and 100 percent useable product.

#### Serving Suggestions:

Fresh diced tomatoes (1/4") are a small diced tomato that can be used to create fresh salsas, as a component for fresh salads, as a topping for Tacos or burgers, for an item on the salad bar, and as an ingredient anywhere diced tomatoes are required.



## ROUND DICED 1/4" FRESH REF

CROSS VALLEY FARMS

2/5 LB

# 6579338

Manufacturer: CROSS VALLEY FARMS

Manufacturer Product #: 449533

### Nutritional Facts

Serving Size g (90g)  
Servings Per Container

Amount Per Serving  
Calories 15  
Calories from Fat 0

% Daily Value \*

Total Fat 0g	0%
Saturated Fat 0g	0%
Trans Fat 0g	
Cholesterol 0mg	0%
Sodium 0mg	0%
Total Carbohydrate 4g	1%
Dietary Fiber 1g	4%
Sugars 2g	
Protein 1g	
Vitamin A	15%
Vitamin C	20%
Calcium	0%
Iron	2%

\* Percent Daily Values are based on a 2,000 calorie diet. Your daily values may be higher or lower depending on your calorie needs:

	Calories	2,000	2,500
Total Fat	Less than	65g	80g
Sat Fat	Less than	20g	25g
Cholesterol	Less than	300mg	300mg
Sodium	Less than	2400mg	2400mg
Total Carbohydrate		300g	375mg
Dietary Fiber		25g	30mg

### Supplemental Facts

% Daily Value \*

None Specified at this time

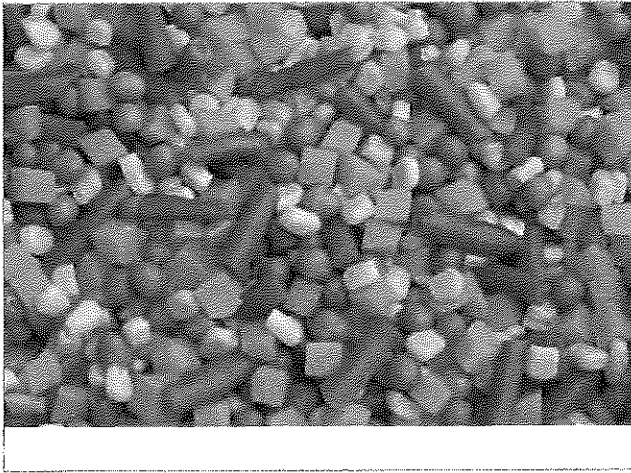
\* Percent Daily Values are based on a 2,000 calorie diet. Your daily values may be higher or lower depending on your calorie needs.

### Allergens

ALLERGEN	DOES NOT CONTAIN	CONTAIN	MAY CONTAIN	NO DATA
Crustacean				•
Eggs				•
Fish				•
Gluten				•
Lactose				•
Milk				•
Mustard				•
Peanuts				•
Soy				•
Tree nuts				•
Wheat				•

### Nutritional Disclaimer

The nutritional and ingredient information provided is based on data US Foods, Inc. receives from manufacturers and may include information derived from third-party sources such as the United States Department of Agriculture. The information provided is representative and, as a result, there may be some slight differences between the information posted and the information on the product label with respect to ingredients and/or nutritional values. The most accurate and up to date source for product information is on the product label. US Foods, Inc. neither assumes any legal liability nor makes any warranty or guaranty, either express or implied, regarding the completeness, accuracy or usefulness of this information. Product images are provided for reference only and may not reflect current packaging.



HARVEST VALUE

## Vegetable Blend

4 WAY FROZEN

# 7328438



12/2.5 LB

### Product Description

Manufacturer: HARVEST VALUE, Mfr. Product # 672086

#### Additional Description

VEGETABLE BLEND, 4 WAY FZN. CARROTS CORN, PEAS, GREEN BEANS.

#### Ingredients

HARVEST VALUE 4-MIXED VEGETABLES (DICED CARROTS, PEAS, CORN, CUT GREEN BEANS)

#### Product Information

Class: 26 - GROCERY, REF & FZN

Category: 222 - VEGETABLES, FZN

Group: 1944 - VEGETABLE BLENDS, FROZEN

### Preparation & Cooking

#### Preparations and Cooking Instructions

PRODUCT CAN BE STEAMED, SAUTEED, OR GRILLED.

#### Handling Instructions

KEEP FROZEN UNTIL READY TO USE. DO NOT REFREEZE OR OVERCOOK.

#### Serving Suggestions:

CAN BE USED AS A SIDE DISH OR IN A RECIPE WHERE THIS VEGETABLE BLEND IS REQUIRED



## 4 WAY FROZEN

HARVEST VALUE

12/2.5 LB

# 7328438

Manufacturer: HARVEST VALUE

Manufacturer Product #: 672086

### Nutritional Facts

Serving Size g (85G)

Servings Per Container 156

Amount Per Serving

Calories 44

Calories from Fat 0

% Daily Value \*

Total Fat .4g 1%

Saturated Fat .1g 0%

Trans Fat .0g

Cholesterol .0mg 0%

Sodium 26mg 1%

Total Carbohydrate 9.6g 3%

Dietary Fiber 2.8g 11%

Sugars 2.7g

Protein 1.7g

Vitamin A 104%

Vitamin C 6%

Calcium 2%

Iron 3%

\* Percent Daily Values are based on a 2,000 calorie diet. Your daily values may be higher or lower depending on your calorie needs.

		Calories	2,000	2,500
Total Fat	Less than	65g	80g	
Sat Fat	Less than	20g	25g	
Cholesterol	Less than	300mg	300mg	
Sodium	Less than	2400mg	2400mg	
Total Carbohydrate		300g	375mg	
Dietary Fiber		25g	30mg	

### Supplemental Facts

% Daily Value \*

Polyunsaturated Fat .2 g

Monosaturated Fat .1 g

\* Percent Daily Values are based on a 2,000 calorie diet. Your daily values may be higher or lower depending on your calorie needs.

### Allergens

ALLERGEN	DOES NOT CONTAIN	CONTAIN	MAY CONTAIN	NO DATA
Crustacean	•			
Eggs	•			
Fish	•			
Gluten				•
Lactose				•
Milk	•			
Mustard				•
Peanuts	•			
Soy	•			
Tree nuts	•			
Wheat	•			

### Nutritional Claims

- This product is trans fat free

### Marketing Claims

- This product is kosher

### Nutritional Disclaimer

The nutritional and ingredient information provided is based on data US Foods, Inc. receives from manufacturers and may include information derived from third-party sources such as the United States Department of Agriculture. The information provided is representative and, as a result, there may be some slight differences between the information posted and the information on the product label with respect to ingredients and/or nutritional values. The most accurate and up to date source for product information is on the product label. US Foods, Inc. neither assumes any legal liability nor makes any warranty or guaranty, either express or implied, regarding the completeness, accuracy or usefulness of this information. Product images are provided for reference only and may not reflect current packaging.





HARVEST VALUE

## Vegetable Blend

CALIFORNIA NORMANDY FROZEN

# 2328482



20 LB

### Product Description

Manufacturer: HARVEST VALUE, Mfr. Product # 672069

#### Additional Description

CONTAINS APPROXIMATELY 40% BROCCOLI CUTS, 40% CAULIFLOWER, 20% CC SLICED CARROTS.

#### Ingredients

BROCCOLI, CAULIFLOWER, CARROTS/ BROCOLI, COLIFLOR, ZANAHORIAS

#### Product Information

Class: 26 - GROCERY, REF & FZN

Category: 222 - VEGETABLES, FZN

Group: 1944 - VEGETABLE BLENDS, FROZEN

### Preparation & Cooking

#### Preparations and Cooking Instructions

PRODUCT CAN BE STEAMED, SAUTEED, OR GRILLED.

#### Handling Instructions

KEEP FROZEN UNTIL READY TO USE. DO NOT REFREEZE OR OVERCOOK.

#### Serving Suggestions:

CAN BE USED AS A SIDE DISH OR IN A RECIPE WHERE THIS VEGETABLE BLEND IS REQUIRED

# CALIFORNIA NORMANDY FROZEN

HARVEST VALUE

20 LB

**Manufacturer:** HARVEST VALUE

# 2328482

**Manufacturer Product #: 672069**

## Nutritional Facts

Serving Size g (85G)  
Servings Per Container

Amount Per Serving

**Calories 30**

**Calories from Fat** 0

**% Daily Value \***

**Total Fat** 0g

**Saturated Fat 0g** **0%**

Trans Fat Og

**Cholesterol 0mg** **0%**

**Sodium 30mg** **1%**

**Total Carbohydrate 4g 1%**

**Dietary Fiber 2g** **8%**

**Sugars 2g**

**Protein 2g**

Vitamin A	10%
-----------	-----

**Vitamin C** **35%**

**Calcium** **2%**

Iron 0%

\* Percent Daily Values are based on a 2,000 calorie diet. Your daily values may be higher or lower depending on your calorie needs:

	Calories	2,000	2,500
Total Fat	Less than	65g	80g
Sat Fat	Less than	20g	25g
Cholesterol	Less than	300mg	300mg
Sodium	Less than	2400mg	2400mg
Total Carbohydrate		300g	375mg
Dietary Fiber		25g	30mg

## Supplemental Facts

% Daily Value \*

Polyunsaturated Fat 0 g

**Monosaturated Fat 0 g**

Potassium 125 mg	4%
------------------	----

\* Percent Daily Values are based on a 2,000 calorie diet. Your daily values may be higher or lower depending on your calorie needs.

## Allergens

ALLERGEN	DOES NOT CONTAIN	CONTAIN	MAY CONTAIN	NO DATA
Crustacean	●			
Eggs	●			
Fish	●			
Gluten				●
Lactose				●
Milk	●			
Mustard				●
Peanuts	●			
Soy	●			
Tree nuts	●			
Wheat	●			

### Nutritional Claims

- This product is trans fat free

### Marketing Claims

- This product is kosher

### Nutritional Disclaimer

The nutritional and ingredient information provided is based on data US Foods, Inc. receives from manufacturers and may include information derived from third-party sources such as the United States Department of Agriculture. The information provided is representative and, as a result, there may be some slight differences between the information posted and the information on the product label with respect to ingredients and/or nutritional values. The most accurate and up to date source for product information is on the product label. US Foods, Inc. neither assumes any legal liability nor makes any warranty or guaranty, either express or implied, regarding the completeness, accuracy or usefulness of this information. Product images are provided for reference only and may not reflect current packaging.