



SMUCKER'S UNCRUSTABLES

Sandwich

PEANUT BUTTER & JELLY GRAPE CRUSTLESS WHEAT IW FROZEN

7924339

NEW

72/5.3 OZ

\$66.12 / CS

All product information contained herein is subject to change, including pricing, promotions and nutritional. For current information at the time of purchase, please contact your sales associate.



PEANUT BUTTER & JELLY GRAPE CRUSTLESS WHEAT IW FROZEN

SMUCKER'S UNCRUSTABLES

72/5.3 OZ

Manufacturer: SMUCKER FOODSERVICE INC

7924339

\$66.12 / CS

Manufacturer Product #: 5150021027

Product Description

Additional Description

PRODUCT OF THE US. FS

Ingredients

PEANUT BUTTER: PEANUTS, SUGAR, CONTAINS 2 OR LESS OF: MOLASSES, FULLY HYDROGENATED VEGETABLE OILS RAPESEED AND SOYBEAN, MONO AND DIGLYCERIDES, SALT. BREAD: UNBLEACHED WHOLE WHEAT FLOUR, ENRICHED UNBLEACHED FLOUR WHEAT FLOUR, MALTED BARLEY FLOUR, NIACIN, FERROUS SULFATE, THIAMIN MONONITRATE, RIBOFLAVIN, FOLIC ACID, WATER, YEAST, SUGAR, SOYBEAN OIL, CONTAINS 2 OR LESS OF: WHEAT GLUTEN, SALT, DOUGH CONDITIONERS DISTILLED MONO AND DIGLYCERIDES, SODIUM STEAROYL LACTYLATE, DATEM, ENZYMES [WITH WHEAT STARCH, ASCORBIC ACID, CALCIUM PEROXIDE]. GRAPE JELLY: SUGAR, GRAPE JUICE, CONTAINS 2 OR LESS OF: PECTIN, CITRIC ACID, POTASSIUM SORBATE PRESERVATIVE.

Product Information

Class: 20 - APPETIZERS, ENTREES, & POTATOES REF & FZN

Category: 151 - ENTREES, REF & FZN

Group: 2615 - SANDWICHES, FROZEN

Manufacture Information

MANUFACTURER :SMUCKER FOODSERVICE INC

MANUFACTURER PRODUCT #:5150021027

Preparation & Cooking

Preparations and Cooking Instructions

FROM FROZEN: THAW 60 MINUTES AT ROOM TEMPERATURE. HOLD AMBIENT UP TO 10 HOURS. REFRIGERATE UP TO 24 HOURS. DO NOT REFREEZE AFTER THAWING. DO NOT MICROWAVE.

Handling Instructions

Keep frozen until ready to serve.

Serving Suggestions:

Serve with fresh fruits or vegetables to satisfy even the pickiest students.

All product information contained herein is subject to change, including pricing, promotions and nutritionals. For current information at the time of purchase, please contact your sales associate.



PEANUT BUTTER & JELLY GRAPE CRUSTLESS WHEAT IW FROZEN

SMUCKER'S UNCRUSTABLES

72/5.3 OZ

Manufacturer: SMUCKER FOODSERVICE INC

7924339

\$66.12 / CS

Manufacturer Product #: 5150021027

Customers Also Bought



GOLD KIST
CHICKEN, NUGGET .6 OZ
BREADED WHOLE-GRAIN-RICH
HOMESTYLE WHITE & DARK
MEAT



\$70.03 / CS



EGGO
WAFFLE, CINNAMON BAKED
FROZEN POUCH MINI
7613367



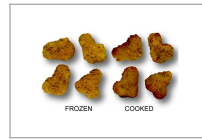
\$27.69 / CS



KELLOGGS
PASTRY, POP TART
CHOCOLATE FUDGE FROSTED
WHOLE GRAIN 1.76 OZ SHELF
STABLE T



\$36.53 / CS



GOLD KIST
CHICKEN, POPCORN BREADED
WHOLE GRAIN DARK MEAT
CHILD-NUTRITION COOKED
FROZE



\$98.50 / CS



FRITO LAY
CHIP, CHEESE CRUNCHY BAKED
WHOLE GRAIN SS BAG SNACK
5599983



\$28.59 / CS



YANGS 5TH TASTE
CHICKEN, CHUNK RANDOM
BREADED W/ MANDARIN
ORANGE SAUCE LEG MEAT
COOKED FROZ
9865379

\$124.68 / CS



EGGO
PANCAKE, MAPLE WHOLE-
GRAIN-RICH COOKED FROZEN
POUCH MINI
7613524



\$27.69 / CS



GOLD KIST
CHICKEN, POPCORN BREADED
WHOLE GRAIN WHITE & DARK
MEAT CHILD-NUTRITION COOK



\$71.44 / CS



PEANUT BUTTER & JELLY GRAPE CRUSTLESS WHEAT IW FROZEN

SMUCKER'S UNCRUSTABLES

72/5.3 OZ

Manufacturer: SMUCKER FOODSERVICE INC

7924339

\$66.12 / CS

Manufacturer Product #: 5150021027

Shipping Information:

Physical Attributes

Gross Weight:	25.58 LB	Height:	13.89 IN	Length:	17.2 IN
Net Weight:	23.85 LB	Width:	11.32 IN	Cube:	1.565 CF
Catch Weight:	NO				

Storage Information

Min. Temperature:	-10 FA
Max. Temperature:	15 FA



PEANUT BUTTER & JELLY GRAPE CRUSTLESS WHEAT IW FROZEN

SMUCKER'S UNCRUSTABLES

72/5.3 OZ

Manufacturer: SMUCKER FOODSERVICE INC

7924339

\$66.12 / CS

Manufacturer Product #: 5150021027

Nutritional Facts

Serving Size (150gr)
Servings Per Container 72

Amount Per Serving		Calories from Fat
Calories	600	
		% Daily Value *
Total Fat	33g	42%
Saturated Fat	7g	35%
Trans Fat	g	
Cholesterol	0mg	0%
Sodium	530mg	23%
Total Carbohydrate	64g	23%
Dietary Fiber	7g	25%
Sugars	30g	
Protein	18g	
Vitamin A		
Vitamin C		
Calcium		6%
Iron		10%

* Percent Daily Values are based on a 2,000 calorie diet. Your daily values may be higher or lower depending on your calorie needs:

	Calories	2,000	2,500
Total Fat	Less than	65g	80g
Sat Fat	Less than	20g	25g
Cholesterol	Less than	300mg	300mg
Sodium	Less than	2400mg	2400mg
Total Carbohydrate		300g	375mg
Dietary Fiber		25g	30mg

Supplemental Facts

	% Daily Value *
Vitamin D 0 mcg	0%
Potassium 466 mg	10%

* Percent Daily Values are based on a 2,000 calorie diet. Your daily values may be higher or lower depending on your calorie needs.

Ingredients, Allergens & Nutritional Information

IMPORTANT:Product information, including ingredients, allergens and nutritional information, is provided by manufacturers/suppliers, and includes information from the Global Data Synchronization Network (GDSN) and other third party sources such as the United States Department of Agriculture. We know that allergen information is important to many customers so we are providing product information from the manufacturers/suppliers for the 8 most common allergens identified by the FDA. This information may not cover potential cross-contact risks or alternate forms of the allergen(s). Product formulations are subject to change and nutritional values can vary due to production, seasonal and other changes. Please always review the ingredients, allergens, nutrition information and other product information on the product packaging delivered to your location. US Foods does not assume any legal liability and makes no warranty or guaranty, express or implied, regarding the completeness or accuracy of this information. Product images are provided for reference only and may not reflect current packaging.

Nutritional Claims

- This product has child nutrition certification